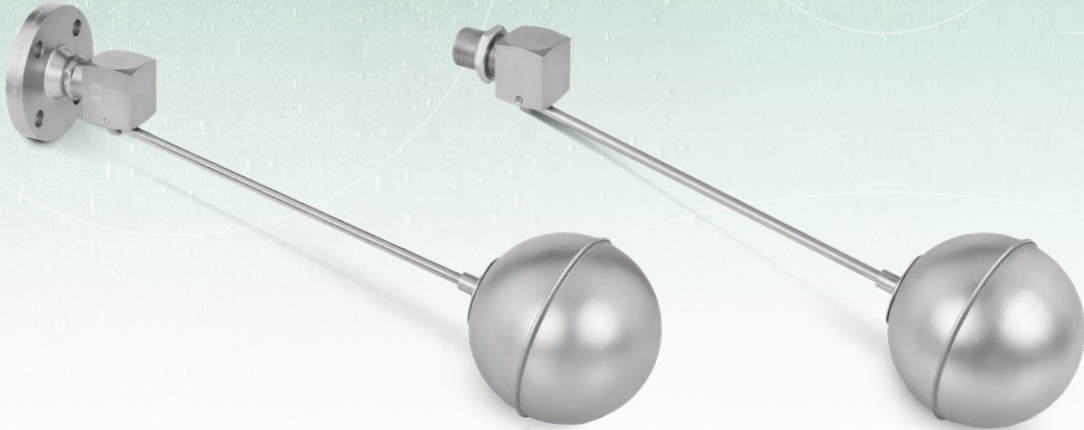




Float valve

Flange connection Mod. 150 - Thread Mod. 151
EN | ASME/MNPT | ASME/ANSI



Model 150

Model 151

Operation

For controlling the liquid level in tanks, reservoirs, etc.

Regulation

- UNE-EN 1092-1
- UNE-EN ISO 228
- ASME B16.5
- ASME B1.20.1

Specifications

Size

- DN-15 to DN-65
- R 3/8" to 2 1/2"
- MNPT 3/8" to 2 1/2"
- NPS 1/2" to 2 1/2"

Temperature range

- -60 °C to +200 °C

Applications

- Liquids

Materials

- Stainless steel

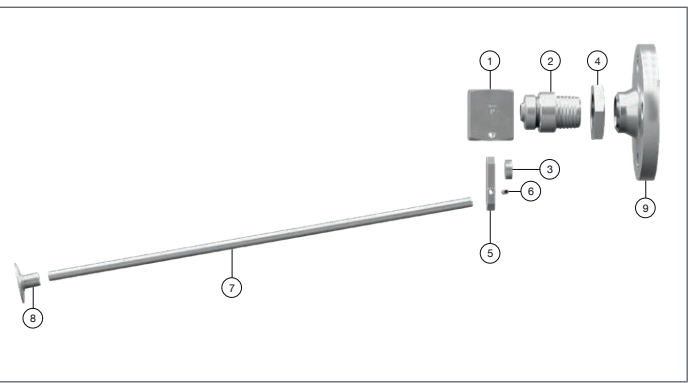
Maximum pressure

- Up to 16 bar

Certification



N°. PIECE	PIECE	MATERIAL		
		STAINLESS STEEL		
1	Body	Stainless steel (EN-1.4401)		
2	Coupling	Stainless steel (EN-1.4401)		
3	Closure	Silicone's rubber		
4	Nut	Stainless steel (EN-1.4401)		
5	Lever	Stainless steel (EN-1.4408)		
6	Pin	Stainless steel (EN-1.4401)		
7	Stem	Stainless steel (EN-1.4401)		
8	Connector	Stainless steel (EN-1.4401)		
9	Flange	Stainless steel (EN-1.4401)		
DN		15 to 65		
R		3/8" to 2 1/2"		
MNPT		3/8" to 2 1/2"		
NPS		1/2" to 2 1/2"		
OPERATING CONDITIONS	PS [bar]	16	15	14
	MAX. TEMP. [°C]	120	180	200
	MIN. TEMP. [°C]		-60	



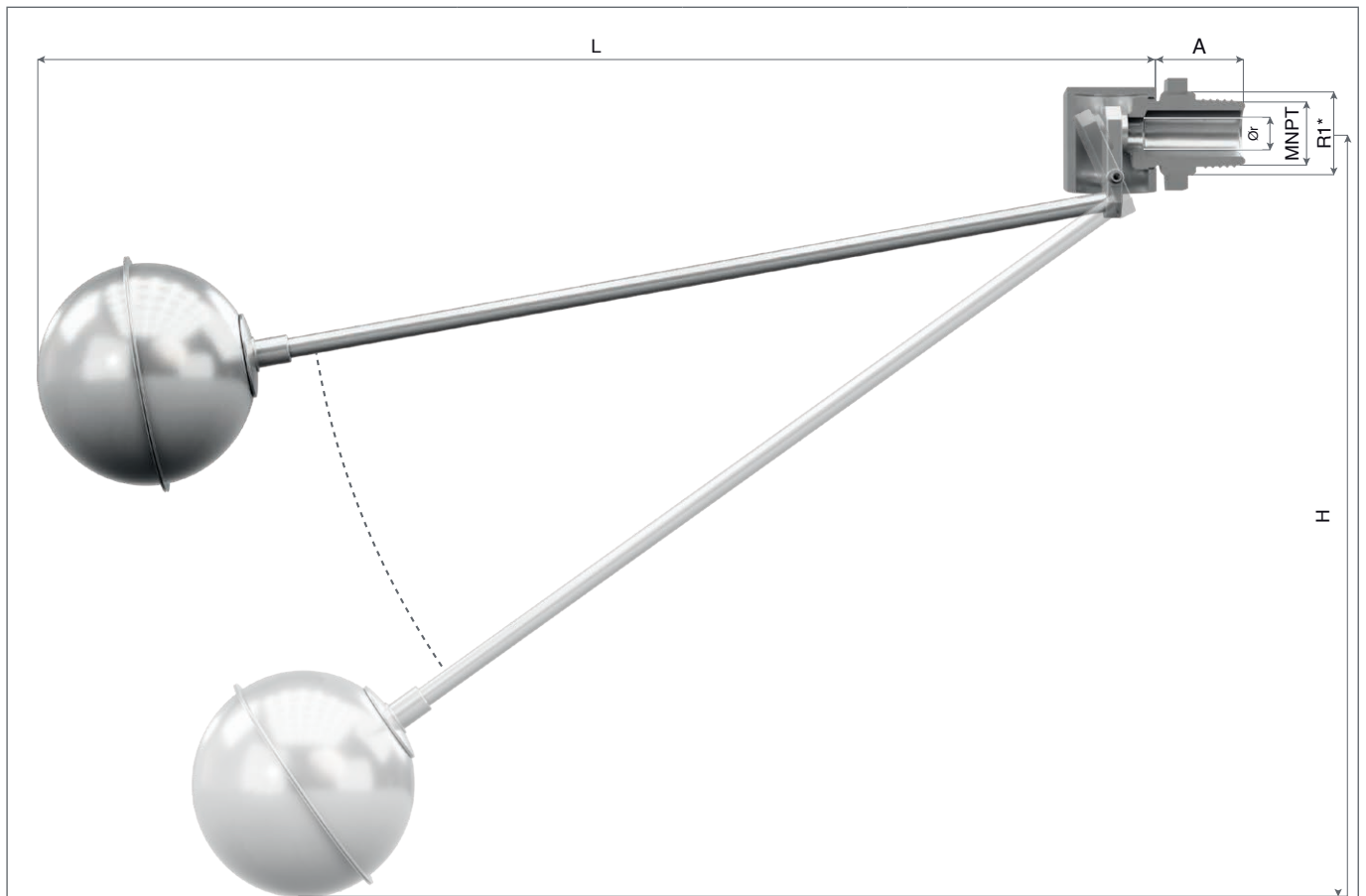
DN	NPS	R	MNPT	EN	ASME	A [mm]	Ør* [mm]	PRESSURE [bar]	PRESSURE [bar]															
									1	2	3	4	5	6	7	8	9	10	11	12	13	14	15	16
DN	Flange PN-16 EN-1092-1																							
NPS	Flange class 150 lbs ASME B16.5																							
R	Male thread Gas Whitworth Cylindrical ISO 228/1 (DIN-259)																							
MNPT	MAile thread NPT ASME B1.20.1 *R1 = Male thread Gas Whitworth Cylindrical ISO 228/1 (DIN-259)																							
R	3/8"					31	6	BUOY [Ø]	C.60 x 120				E.90				E.110				P.150 x 60			
								L [mm]	396				366				386				428			
								H [mm]	215				210				225				222			
MNPT	3/8"							WEIGHT [kg]	0,38				0,41				0,5				0,6			
								CODE 151	2008-151.3382				2008-151.3382 (+) 34005											
								FLOW [l/h] 20 °C	1058	1560	1780	2027	2270	2482	2603	2640	2794	2880	2970	3120	3250	3380	3510	3614
DN - NPS	15 - 1/2"			EN 1092-1	ASME B16.5	51	10	BUOY [Ø]	C.60 x 120		E.90		E.110		P.150 x 60		E.150							
								L [mm]	434		404		424		420		413							
								H [mm]	252		245		260		267									
R	1/2"	D1 [mm]	95	90				WEIGHT [kg]	0,53/1,31		0,56/1,34		0,64/1,42		0,90/1,68									
		k1 [mm]	65	60,3				CODE 150	2008-150.30221 (+) 34005				2008-150.30221				2008-150.30222							
MNPT	1/2" (R1=3/4")	l1 [mm]	14	15,9				CODE 151	2008-151.30221 (+) 34005				2008-151.30221				2008-151.30222							
		b1 [mm]	16	11,2				FLOW [l/h] 20 °C	2644	3738	4575	5287	5640	6346	7385	7457	7931	8354	8674	9051	9425			
		Screws N°	4	4																				
DN - NPS	20 - 3/4"		EN 1092-1	ASME B16.5		53	12,5	BUOY [Ø]	E.90		E.110		P.150 x 60		E.150									
		L [mm]	450		469		509		507															
		H [mm]	240		255		250		282															
R	3/4"	D1 [mm]	105	100				WEIGHT [kg]	1,04/2,04		1,12/2,12		1,27/2,27		1,32/2,32									
		k1 [mm]	75	69,9				CODE 150	2008-150.3342															
MNPT	3/4" (R1=1")	l1 [mm]	14	15,9				CODE 151	2008-151.3342															
		b1 [mm]	18	12,7				FLOW [l/h] 20 °C	4522	6395	7823	9044	10090	11033	11937	12797	13566	14289	14850					
		Screws N°	4	4																				
DN - NPS	25 - 1"		EN 1092-1	ASME B16.5		53	16	BUOY [Ø]	E.110		P.150 x 80		E.150		E.150		P.250 x 95							
		L [mm]	475		507		565		510		615		732											
		H [mm]	257		250		275		285		327		350											
R	1"	D1 [mm]	115	110				WEIGHT [kg]	1,20/2,54		1,34/2,68		1,48/2,82		1,38/2,72		1,25/2,59		1,77/3,11					
		k1 [mm]	85	79,4				CODE 150	2008-150.31021				2008-150.31022											
MNPT	1" (R1=1 1/4")	l1 [mm]	14	15,9				CODE 151	2008-151.31021				2008-151.31022											
		b1 [mm]	18	14,3				FLOW [l/h] 20 °C	6480	9270	11352	13148	14667	16044	17363	18369	19398	20510						
		Screws N°	4	4																				
DN - NPS	32 - 1 1/4"		EN 1092-1	ASME B16.5		58,5	21	BUOY [Ø]	E.150		P.250 x 95		E.200		P.300 x 115									
		L [mm]	637		737		680		787															
		H [mm]	317		327		355		350															
R	1 1/4"	D1 [mm]	140	115				WEIGHT [kg]	1,82/3,82		2,21/4,21		1,95/3,95		2,72/4,72									
		k1 [mm]	100	88,9				CODE 150	2008-150.31421				2008-150.31422											
MNPT	1 1/2" (R1=1 1/2")	l1 [mm]	18	15,9				CODE 151	2008-151.31421				2008-151.31422											
		b1 [mm]	18	15,9				FLOW [l/h] 20 °C	11508	16226	19925	23016	25663	28080	30382	32204	34136	36040						
		Screws N°	4	4																				
DN - NPS	40 - 1 1/2"		EN 1092-1	ASME B16.5		61,5	24	BUOY [Ø]	P.250 x 95		E.200		P.300 x 115		P.350 x 130 ó E.300									
		L [mm]	660		610		710		760 ó 710															
		H [mm]	285		315		310		330 ó 385															
R	1 1/2"	D1 [mm]	150	125				WEIGHT [kg]	2,60/4,8		2,57/4,77		3,11/5,31		3,25 ó 3,30/5,45 ó 5,50									
		k1 [mm]	110	98,4				CODE 150	2008-150.3121				2008-150.3122											
MNPT	2" (R1=2")	l1 [mm]	18	15,9				CODE 151	2008-151.3121				2008-151.3122											
		b1 [mm]	18	17,5				FLOW [l/h] 20 °C	14548	20512	25167	29070	32442	35362	38544	42216	46089	50200						
		Screws N°	4	4																				
DN - NPS	50 - 2"		EN 1092-1	ASME B16.5		63,5	29	BUOY [Ø]	E.200		P.300 x 115		P.350 x 130		E.300									
		L [mm]	677		777		827		777															
		H [mm]	410		417		440		485															
R	2"	D1 [mm]	165	150				WEIGHT [kg]	3,86/6,54		4,39/7,07		4,81/7,49		4,87/7,55									
		k1 [mm]	125	120,7				CODE 150	2008-150.3202															
MNPT	2" (R1=2 1/2")	l1 [mm]	18	19,1				CODE 151	2008-151.3202															
		b1 [mm]	18	19,1				FLOW [l/h] 20 °C	22136	31648	38296	44273	49364	54010	58439	63114	68030	72792						
		Screws N°	4	4																				
DN - NPS	65 - 2 1/2"		EN 1092-1	ASME B16.5		67,5	40	BUOY [Ø]	E.200		P.300 x 115		P.350 x 130 ó E.300											
		L [mm]	704		804		845 ó 804																	
		H [mm]	420		427		450 ó 490																	
R	2 1/2"	D1 [mm]	185	180				WEIGHT [kg]	6,52/9,72		7,30/10,5		7,72 ó 7,50/10,92 ó 10,70											
		k1 [mm]	145	139,7				CODE 150	2008-150.3222															
MNPT	2 1/2" (R1=3")	l1 [mm]	18	19,1				CODE 151	2008-150.3222															
		b1 [mm]	18	22,3																				

IMPORTANT

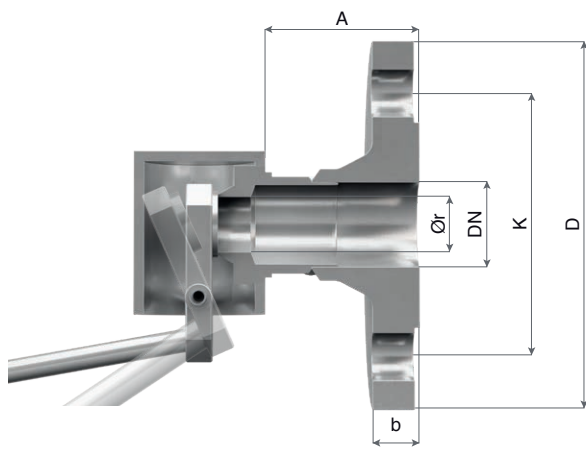
- Apply the code of the buot that corresponds, according to the Model 152 catalog.
- Buoys suitable for higher pressures are equally valid for lower pressures.
- CODE 150 ANSI150# add 1 to CODE.
- CODE 151 NPT add 1 to CODE.

- E. [Spherical buoy]
- P. [Flat buoy]
- C. [Cylindrical buoy]

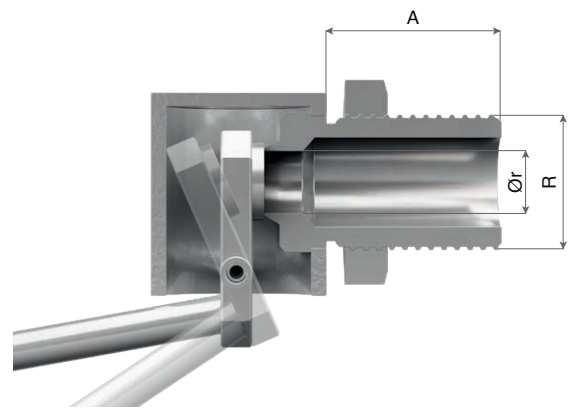
*Ør - Reduced bore.



Mod. 151 (MNPT)



Mod. 150 (DN)



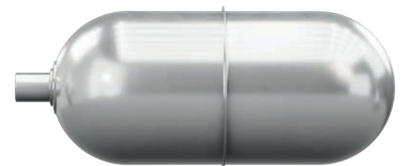
Mod. 151 (R)



Spherical buoy [E.]



Flat buoy [P.]



Cylindrical buoy [C.]

*R1 corresponds to the external thread of the sleeve for threading the nut onto the valve with MNPT thread.

Specifications

- Simplicity of construction ensuring minimum maintenance.
- Guarantees absolute opening and closing precision.
- Materials carefully selected for their resistance to corrosion.
- Fully constructed from laminated bars.
- All valves undergo thorough testing.
- Each component is numbered, registered and inspected. If previously requested, the valve will be accompanied by certificates corresponding to materials, batch, tests and performance.

Depending on demand

- Fluorelastomer closure (Viton), etc.
- Buoy with coating of Epoxy, PTFE (Teflón), Chemical nickel, Shining smooth, etc.
- Entirely Stainless steel (EN-1.4571), (EN-1.4301), etc.

Closure pressure

- The closure pressure of the valve will vary with relation to the specific weight of the liquid being controlled according to the following formula:

$$P = \frac{p}{p_a} P_a$$

- P = Closure pressure liquid.
- p = Specific weight liquid.
- P_a = Closure pressure water.
- p_a = Specific weight water.

