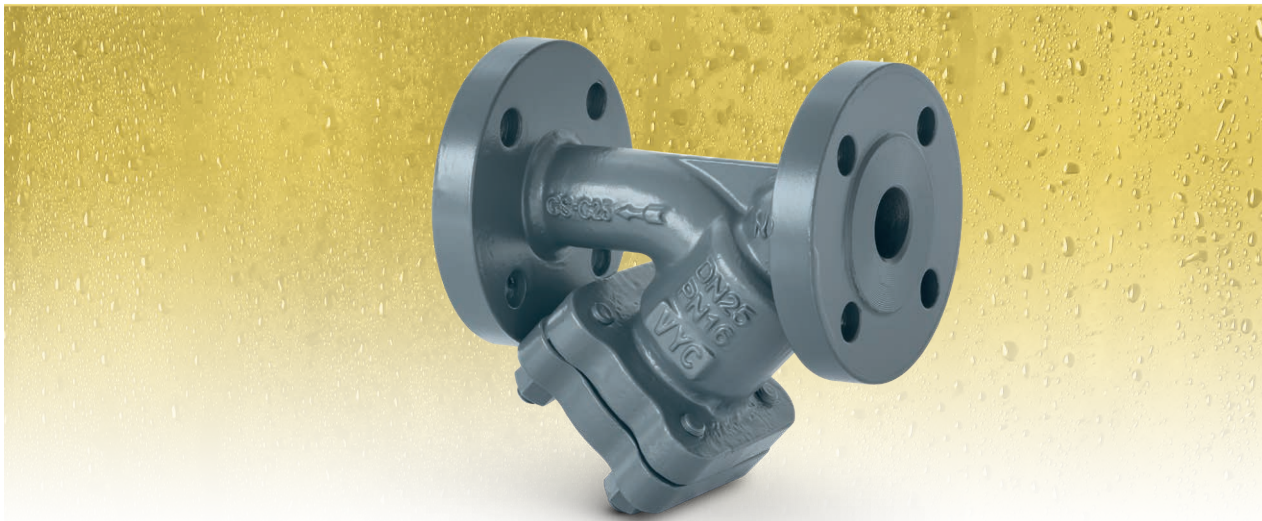


Y-filter

Model 090



EN ASME/ANSI



It enables the filtration and accumulation of suspended solid particles, dragged by fluids, for their subsequent removal. In this way, we protect water control and regulation equipment underneath the filter and prevent collateral damage.

Works with: steam, hot and superheated water, thermal oil, process water, gases, glycol, compressed air, neutral fluids, etc.

Applications in: processing industry, shipbuilding, air conditioning systems, thermal oil installations and systems, vacuum installations, etc. In accordance with the requirements of Directive 2014/68/EU.

Specifications

- Distances between flanges compliant with EN 558-1.
- Flanges compliant with EN 1092-1.
- Designed to be environmentally friendly.
- Materials carefully selected for their resistance to wear, temperature and corrosion.
- Filter free from silicones and asbestos.
- Simple construction.
- Assembly vertically downwards or horizontally with the cover on the lower section. Easy installation.
- Interior design of the body is designed to provide a favourable flow profile. This guarantees a very low pressure loss.
- Long life cycle with high operating efficiency.
- Screw-on cover and threaded cap that facilitate drainage, maintenance and cleaning of the strainer. Practically maintenance-free.
- Each one of the filters is rigorously tested and checked.
- All of the components are numbered, registered and controlled. If it is previously requested, the filter will be accompanied by certificates for materials, strains, tests and performance, as well as the instruction manual in accordance with E.P.D. 2014/68/EU.

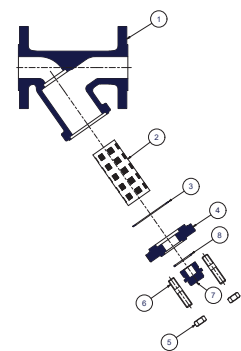
IMPORTANT

If necessary, we recommend the use of Model 008 thermal and acoustic insulation jackets.

On demand:

- Can be made from other types of materials, for special working conditions (high temperatures, fluids, etc.).
- Other connections.

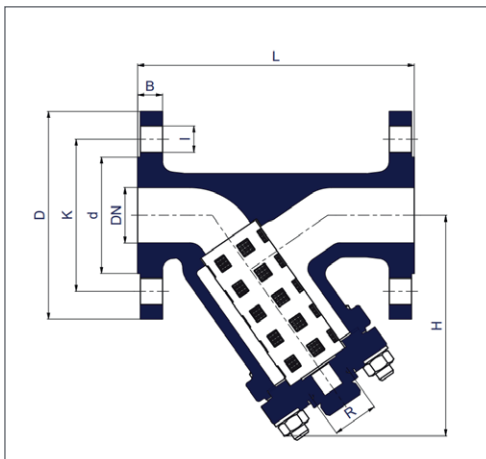
PIECE N°	PIECE	MATERIAL											
		NODULAR CASTING				CARBON STEEL				STAINLESS STEEL			
1	Body	Nodular casting (EN-5.3103)				Carbon steel (EN-1.0619)				Stainless steel (EN-1.4408)			
2	Strainer	Stainless steel (EN-1.4301)				Stainless steel (EN-1.4301)				Stainless steel (EN-1.4401)			
3	Gasket body	Graphite + Stainless steel (EN-1.4301)				Graphite + Stainless steel (EN-1.4301)				Graphite + Stainless steel (EN-1.4301)			
4	Cover	Carbon steel (EN-1.0619)				Carbon steel (EN-1.0619)				Stainless steel (EN-1.4408)			
5	Nut	Carbon steel (EN-1.1141)				Carbon steel (EN-1.1141)				Stainless steel (EN-1.4301)			
6	Stud	Carbon steel (EN-1.1181)				Carbon steel (EN-1.1181)				Stainless steel (EN-1.4401)			
7	Cap	Carbon steel (EN-1.1151)				Carbon steel (EN-1.1151)				Stainless steel (EN-1.4401)			
8	Gasket	Graphite + Stainless steel (EN-1.4301)				Graphite + Stainless steel (EN-1.4301)				Graphite + Stainless steel (EN-1.4301)			
DN		15 to 200 (EN. ANSI)											
PN		16				40				40			
SERVICE CONDITIONS	PRESSURE IN bar	16,00	15,50	14,70	11,2	40,00	37,10	33,30	23,80	40,00	40,00	33,70	27,40
	MAX.TEMP. IN °C	*RT	150	200	350	*RT	100	200	400	*RT	100	200	400
	MIN.TEMP. IN °C	-10				-10				-60			



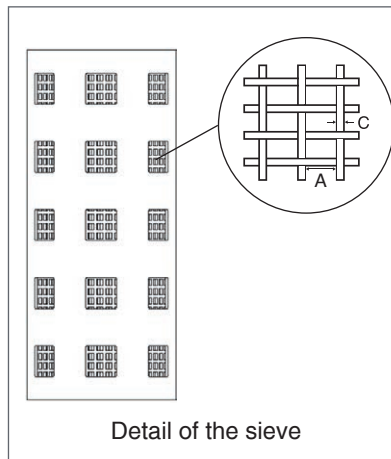
*Room Temperature (-10°C to 50°C).

MODEL	090																																			
DN	15						20						25						32						40						50					
NPS	1/2"						3/4"						1"						1 1/4"						1 1/2"						2"					
CONNECTIONS	I - Flanges PN-16 EN 1092-2																																			
	II - Flanges PN-40 EN 1092-1																																			
	III - Flanges class 150 lbs ASME/ANSI B16.5																																			
	IV - Flanges class 300 lbs ASME/ANSI B16.5																																			
H (PN16, PN40)	85						95						110						125						145						155					
H (class 150 lbs and 300 lbs)	63						70						82						89						141						150					
L EN-558 (PN-16, PN40)	130						150						160						180						200						230					
L ASME B16.10 (class 150 lbs)	140						150						160						180						200						203					
L ASME B16.10 (class 300 lbs)	152						178						203						216						229						267					
	I	II	III	IV	I	II	III	IV	I	II	III	IV	I	II	III	IV	I	II	III	IV	I	II	III	IV	I	II	III	IV	I	II	III	IV	I	II	III	IV
D	95	95	90	95	105	105	100	115	115	115	110	125	140	140	115	135	150	150	125	155	165	165	150	165	165	165	150	165	165	165	150	165	165	165	150	165
K	65,00	65,00	60,30	66,70	75,00	75,00	69,90	82,60	85,00	85,00	79,40	88,90	100,00	100,00	88,90	98,40	110,00	110,00	98,40	114,30	125,00	125,00	120,70	127,00	127,00	127,00	120,70	127,00	127,00	127,00	120,70	127,00	127,00	127,00	120,70	127,00
I	14,00	14,00	15,90	15,90	14,00	14,00	15,90	19,10	14,00	14,00	15,90	19,10	19,00	18,00	15,90	19,10	19,00	18,00	15,90	22,20	19,00	18,00	15,90	19,10	19,00	18,00	15,90	19,10	19,00	18,00	15,90	19,10	19,00	18,00	15,90	19,10
b	14,00	16,00	11,20	14,30	16,00	18,00	12,70	15,90	16,00	18,00	14,30	17,50	18,00	18,00	15,90	19,10	19,00	18,00	17,50	20,70	19,00	20,00	19,10	22,30	19,00	20,00	19,10	22,30	19,00	20,00	19,10	22,30	19,00	20,00	19,10	22,30
A	1,00				1,00				1,00				1,00				1,00				1,00															
C	0,4				0,4				0,4				0,4				0,4				0,4															
R	3/8"				3/8"				3/4"				3/4"				1"				1"															
No. DRILL HOLES	4				4				4				4				4				4				8											
WEIGHT IN.kgs.	NODULAR CASTING		2,50	2,50	1,60	3,20	3,20	3,20	2,00	4,10	4,40	4,40	2,70	5,50	5,90	5,90	3,60	6,80	7,90	7,90	5,50	8,20	9,90	9,90	8,20	10,90	10,90	10,90	9,00	12,00						
	CARBON STEEL STAINLESS STEEL		2,80	2,80	1,80	3,50	3,50	3,50	2,20	4,50	4,80	4,80	3,00	6,00	6,50	6,50	4,00	7,50	8,70	8,70	6,00	9,00	10,90	10,90	9,00	12,00	10,90	10,90	9,00	12,00						
CODE 2301-090.	NODULAR IRON		5026				5346				5106				5146				5126				5206													
	CAST STEEL		8024	80241	80242	8344	83441	83442	8104	81041	81042	8144	81441	81442	8124	81241	81242	8204	82041	82042																
	STAINLESS STEEL		8022	80221	80222	8342	83421	83422	8102	81021	81022	8142	81421	81422	8122	81221	81222	8202	82021	82022																

MODEL	090																																			
DN	65						80						100						125						150						200					
NPS	2 1/2"						3"						4"						5"						6"						8"					
CONNECTIONS	I - Flanges PN-16 EN 1092-2																																			
	II - Flanges PN-40 EN 1092-1																																			
	III - Flanges class 150 lbs ASME/ANSI B16.5																																			
	IV - Flanges class 300 lbs ASME/ANSI B16.5																																			
H (PN16, PN40)	175						210						230						270						300						385					
H (class 150 lbs and 300 lbs)	170						196						237						270						310						400					
L EN-558 (PN-16, PN40)	290						310						350						400						480						600					
L ASME B16.10 (class 150 lbs)	216						243						292						356						406						495					
L ASME B16.10 (class 300 lbs)	292						318						356						400						445						559					
	I	II	III	IV	I	II	III	IV	I	II	III	IV	I	II	III	IV	I	II	III	IV	I	II	III	IV	I	II	III	IV	I	II	III	IV	I	II	III	IV
D	185	185	180	190	200	200	190	210	220	235	230	255	250	270	255	280	285	300	280	320	340	375	345	380	340	375	345	380	340	375	345	380				
K	145,00	145,00	139,70	149,20	160,00	160,00	152,40	168,30	180,00	190,00	190,50	200,00	210,00	220,00	215,90	235,00	240,00	250,00	241,30	269,90	295,00	320,00	298,50	330,20	295,00	320,00	298,50	330,20	295,00	320,00	298,50	330,20				
I	19,00	18,00	19,10	22,20	19,00	18,00	19,10	22,20	19,00	22,00	19,10	22,20	19,00	26,00	22,20	22,20	23,00	26,00	22,20	22,20	23,00	30,00	22,20	26,00	23,00	30,00	22,20	26,00	23,00	30,00	22,20	26,00				
b	19,00	22,00	22,30	25,40	19,00	24,00	23,90	28,60	19,00	24,00	23,90	31,80	19,00	26,00	23,90	35,00	19,00	28,00	25,40	36,60	20,00	34,00	28,60	41,70	20,00	34,00	28,60	41,70	20,00	34,00	28,60	41,70				
A	1,25				1,25				1,60				1,60				1,60				1,60															
C	0,440				0,440				0,440				0,440				0,440				0,440															
R	1"				1"				1 1/2"				1 1/2"				1 1/2"				1 1/2"															
No. DRILL HOLES	4	8	4	8	8	4	8	8	8	8	8	8	8	8	8	8	8	8	8	12	12	8	12	12	12	8	12	12	12	8	12	12				
WEIGHT IN.kgs.	NODULAR CASTING		16,80	16,80	11,80	15,50	19,10	19,10	15,50	20,00	27,30	33,70	23,70	33,70	44,60	50,10	30,00	43,70	58,30	61,00	42,80	61,00	100,10	104,70	68,30	96,50	100,10	104,70	68,30	96,50						
	CARBON STEEL STAINLESS STEEL		18,50	18,50	13,00	17,00	21,00	21,00	17,00	22,00	30,00	37,00	26,00	37,00	49,00	55,00	33,00	48,00	64,00	67,00	47,00	67,00	110,00	115,00	75,00	106,00	110,00	115,00	75,00	106,00						
CODE 2301-090.	NODULAR IRON		5226				5306				5406				5506				5606				5806													
	CAST STEEL		8224	82241	82242	8304	83041	83042	8404	84041	84042	8504	85041	85042	8604	86041	86042	8804	88041	88042																
	STAINLESS STEEL		8222	82221	82222	8302	83021	83022	8402	84021	84022	8502	85021	85022	8602	86021	86022	8802	88021	88022																



FLOW COEFFICIENT EN 60534-2-3 Water at 20°C	
DN	Kvs m3/h ΔP= 1 bar
15	4,60
20	10,30
25	16,50
32	27,20
40	42,00
50	64,50
65	98,00
80	149,00
100	234,00
125	374,00
150	454,00
200	852,00



DN	MESH
15	1
20	1
25	1
32	1
40	1
50	1
65	1.25
80	1.25
100	1.6
125	1.6
150	1.6
200	1.6
250	4.0
300	4.0