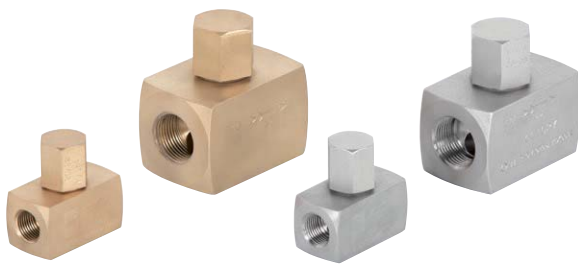


# Check-Filters

## Piston check valve



## Y filter



### Mod. 179 EN ASME/FNPT ASME/SW

- Connection: Female thread GAS  
 Female thread NPT  
 Socket welding ends SW
- R: 1/4" to 2"
- Material: ■ Brass. PN-200  
■ Cast steel. PN-250  
■ Stainless steel. PN-250
- Seal: ● Metal

Check valve with spring operated piston closure.

Según versión



-60°C to +400°C



250,00 bar



Steam/Gases/Liquids

### Mod. 090 EN ASME/ANSI

- Connection: Flange x Flange  
 DN: 15 to 200
- Material: ■ Nodular iron. PN-16  
■ Carbon steel. PN-40  
■ Stainless steel. PN-40

It enables the filtration and accumulation of suspended solid particles, dragged by fluids, for their subsequent removal. In this way, we protect water control and regulation equipment underneath the filter and prevent collateral damage.

Depending on version



-60°C to +400°C



40,00 bar



Steam/Gases/Liquids