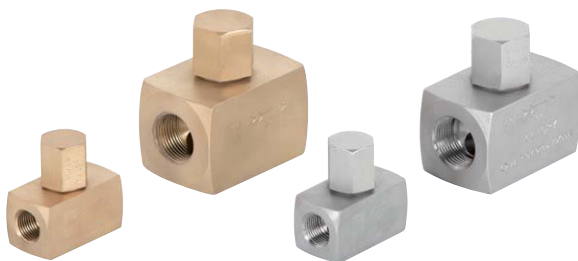


Check-Filters

Piston check valve



Y filter



Mod. 179 EN ASME/FNPT ASME/SW

- Connection: Female thread GAS
 Female thread NPT
 Socket welding ends SW
- R: 1/4" to 2"
- Material: ■ Brass. PN-200
■ Cast steel. PN-250
■ Stainless steel. PN-250
- Seal: ● Metal

Check valve with spring operated piston closure.

Según versión



Mod. 090 EN ASME/ANSI

- Connection: Flange x Flange
 DN: 15 to 200
- Material: ■ Nodular iron. PN-16
■ Carbon steel. PN-40
■ Stainless steel. PN-40

It enables the filtration and accumulation of suspended solid particles, dragged by fluids, for their subsequent removal. In this way, we protect water control and regulation equipment underneath the filter and prevent collateral damage.

Depending on version

